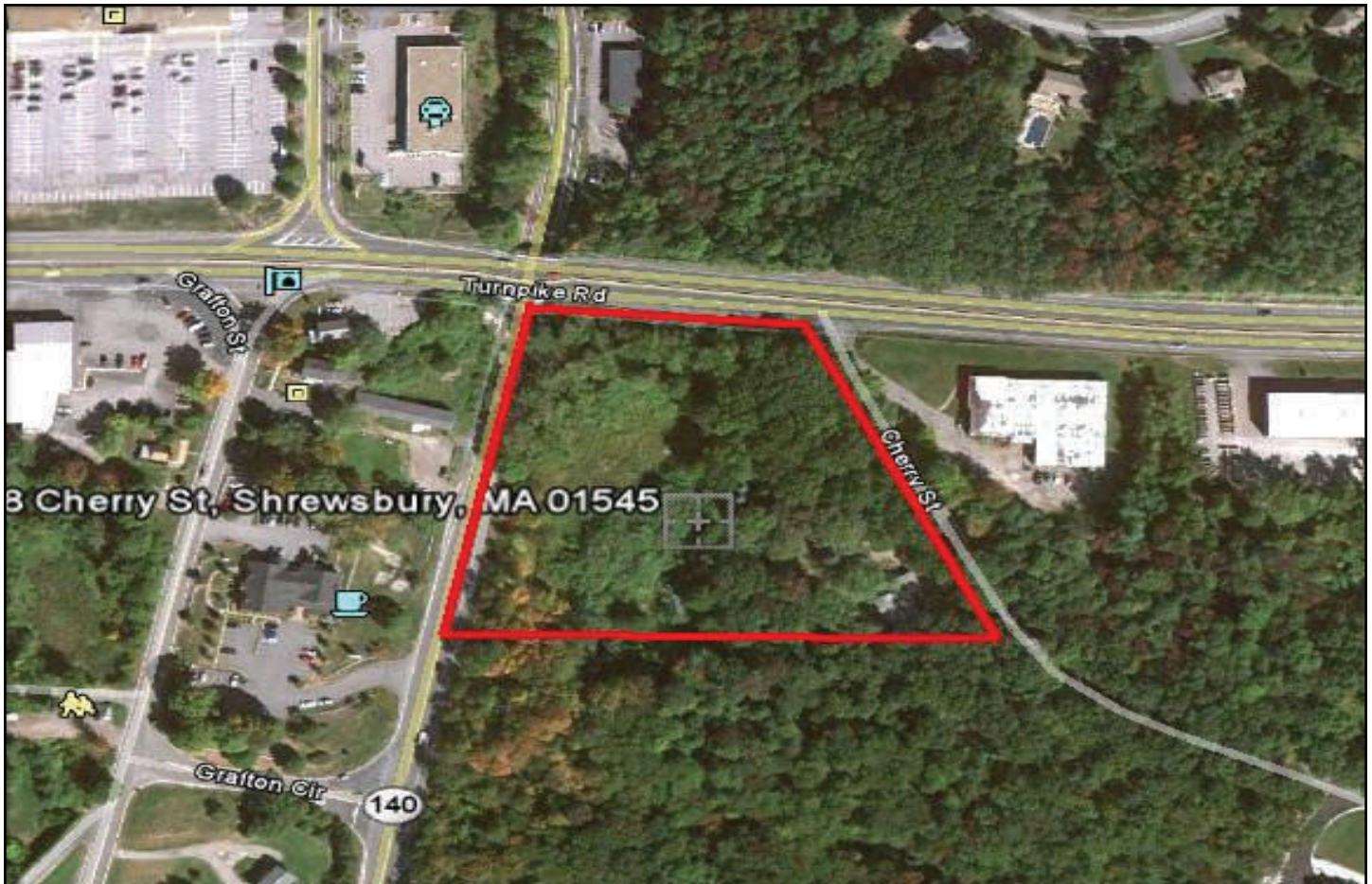


COMMERCIAL LAND FOR SALE

5.626 ACRES

BOSTON TURNPIKE-EAST (RT9) AND GRAFTON ST (RT 140)
SHREWSBURY, MA



For more information or to schedule a tour,
Please contact either of the following
individuals:

JOHN M. HARRITY
Office: 508-635-6798
Cell: 508-450-9494

JAMES G. UMPHREY
Office: 508-635-6790
Cell: 508-6356790

**Kelleher &
Sadowsky**
ASSOCIATES, INC.

SHREWSBURY - HEAVILY TRAVELLED INTERSECTION OF ROUTES 9 & 140

Kelleher & Sadowsky Associates has been named the exclusive sales agent for the property located at 8 Cherry St. in Shrewsbury. This 5.626 acres is zoned Limited Industrial District which is conducive to a variety of commercial developments. The site is located at the intersection of Route 9 east and Route 140 south. This site is highly visible, making this an excellent development location.

<u>Location:</u>	8 Cherry Street, Shrewsbury
<u>Acreage:</u>	5.626 +/- Acres
<u>Zoning:</u>	Limited Industrial
<u>Highway Access:</u>	Routes 9, 140
<u>Asking Price:</u>	\$1,000,000.00

No warranty or representation, expressed or implied, is made as to the accuracy of the information contained herein, and same is submitted subject to errors, omissions, change of price, rental or other conditions, withdrawal without notice, and to any special listing conditions imposed by our principals.